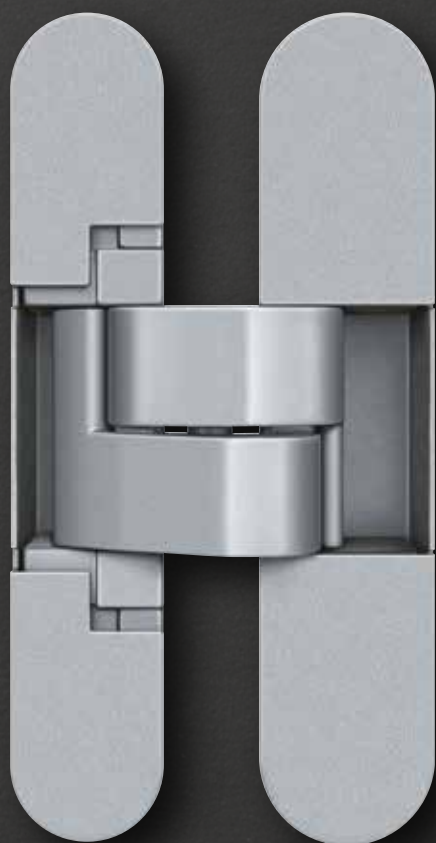
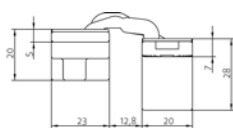
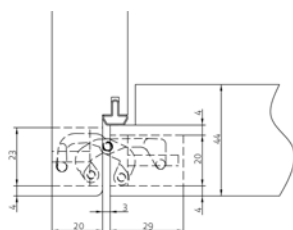
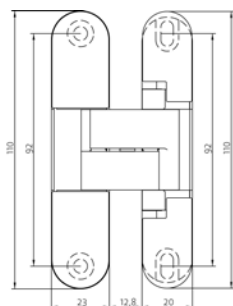


AN 150 3D 28

For flush rebated 28 mm residential doors with 20 mm reduced frame cup





AN 150 3D 28

for flush rebated 28 mm residential doors with 20 mm reduced frame cup up to 40 kg

Hinge	flush rebated	up to 40 kg
-------	---------------	-------------

Product features

- reduced frame cup 20 mm
- door thickness 28 mm
- completely concealed hinge system
- for timber frames
- for flush rebated residential doors
- 3D adjustable (side +/- 1.5 mm, height +/- 2.5 mm, compression +/- 1.0 mm)
- central installation
- material zamak

Technical details

overall length	110.0 mm
width (frame part)	23.0 mm
width (door part)	20.0 mm
cutter diameter	14.0 or 16.0
collar ring diameter	25.0 or 27.0
opening angle	180°

Finishes

Satin Chrome (AN 014), Coated Bronze (AN 017), Black (AN 018), Antique Bronze (AN 035), Aluminium Chrome (AN 036), Polished Brass (AN 037), Polished Chrome (AN 039), Satin Nickel (AN 044), RAL 9016 Traffic White (AN 049)

Combination

receiver	casing frame	AN 140 3D FZ
----------	--------------	--------------

Note

i The load capacity mentioned above refers to the use of 2 hinges per door leaf (900 x 2100 mm).

Suggested screws:

Frame side: Countersunk head screw DIN 7505 A, Diameter 4.5 mm

Door side: Pan head screw DIN 7505 B, Diameter 4.5 mm

